

An aerial photograph of a lush green landscape. In the foreground, there is a large, well-maintained garden with a central pond and a path. The middle ground shows a dense forest of trees. In the background, a small town with red-roofed buildings is visible, surrounded by rolling hills and fields under a soft, hazy sky. The image is framed by green geometric shapes on the left and right sides.

Introduction to the Berkshire Local **Nature Recovery** Strategy

A presentation for the
Wild About Datchet
Environment Event 19/10/2023

Rosie Street
Berkshire Local Nature Recovery Strategy

Who is in the core LNRS team?

- West Berkshire Borough Council
- Reading Borough Council
- Wokingham Borough Council
- Royal Borough of Windsor and Maidenhead
- Bracknell Forest Borough Council
- Slough Borough Council
- Natural England

Agenda

Section	Time
What are Local Nature Recovery Strategies?	15 minutes
Why recover nature in Berkshire?	5 minutes
State of LNRS and opportunities for you	5 minutes
Q&A	5 minutes

What is a Local Nature Recovery Strategy (LNRS)?



Image: Natural England

Understanding the context for LNRS

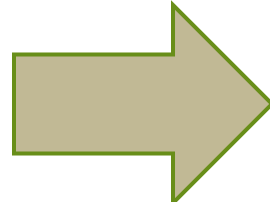
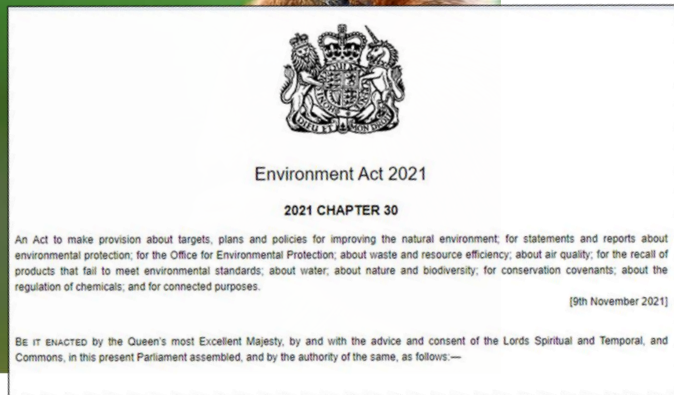
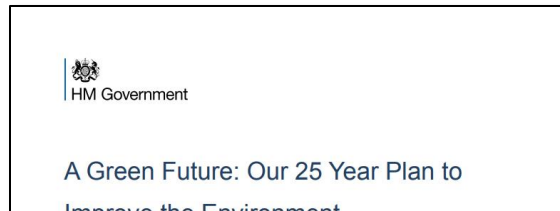
- ▶ England's biodiversity is declining*,
 - ▶ 13% of species are threatened with extinction
 - ▶ 36 plant species have become extinct
 - ▶ 35% species in England have seen their populations decrease
 - ▶ 31% species found in fewer places

▶ Climate change, some land management practices and development pressures have contributed to this decline

* % decline since 1970



Understanding the context for LNRS





Our apex goal
Goal 1:
Thriving plants and wildlife

Improving environmental quality



- Goal 2:** Clean air
- Goal 3:** Clean and plentiful water
- Goal 4:** Managing exposure to chemicals and pesticides

Improving our use of resources



- Goal 5:** Maximise our resources, minimise our waste
- Goal 6:** Using resources from nature sustainably

Improving our mitigation of climate change



- Goal 7:** Mitigating and adapting to climate change
- Goal 8:** Reduced risk of harm from environmental hazards

Improving our biosecurity

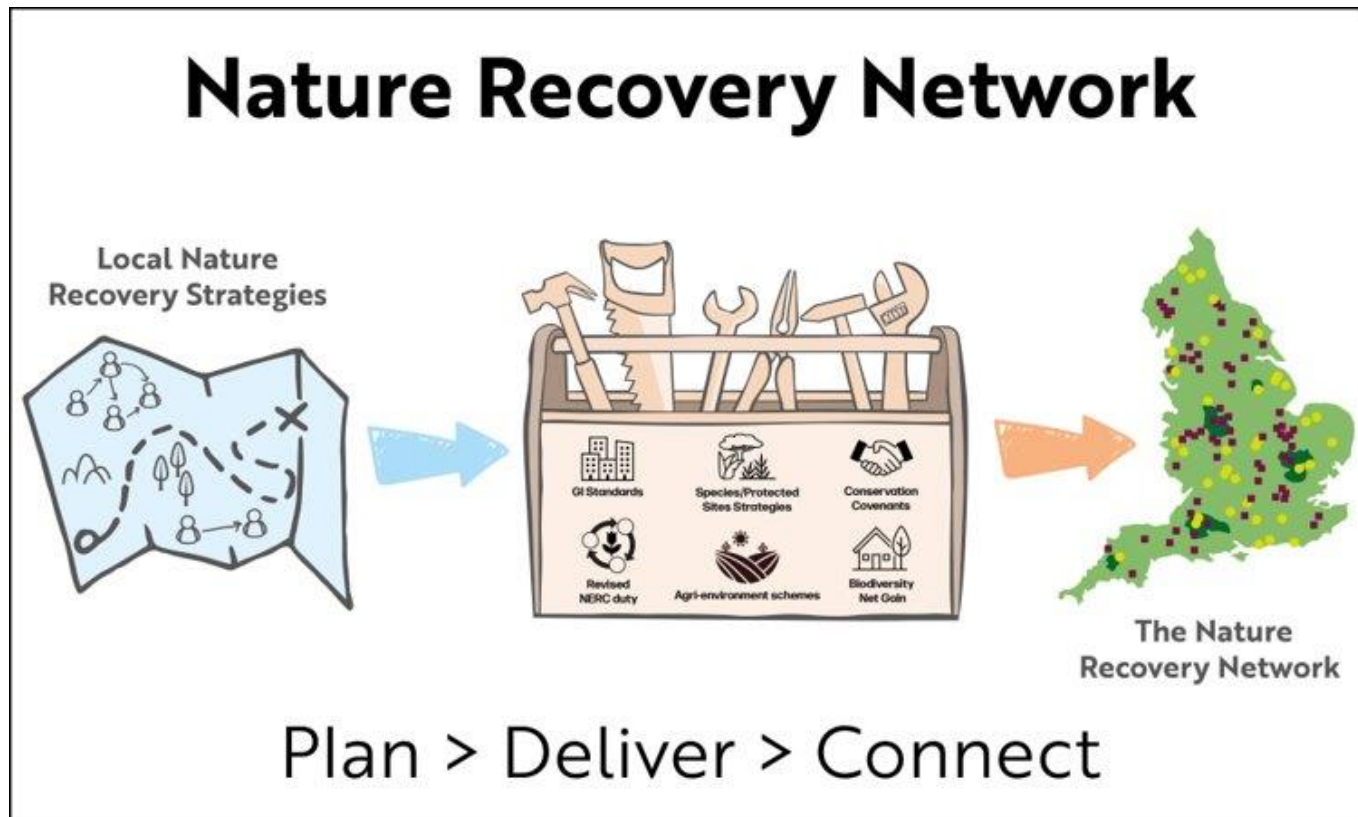


- Goal 9:** Enhancing biosecurity



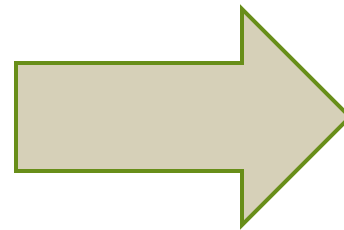
Goal 10: Enhanced beauty, heritage, and engagement with the natural environment

LNRS - part of the Nature Recovery Network



What is an LNRS?

A new, locally led, transparent and collaborative planning and decision-making tool for nature's recovery

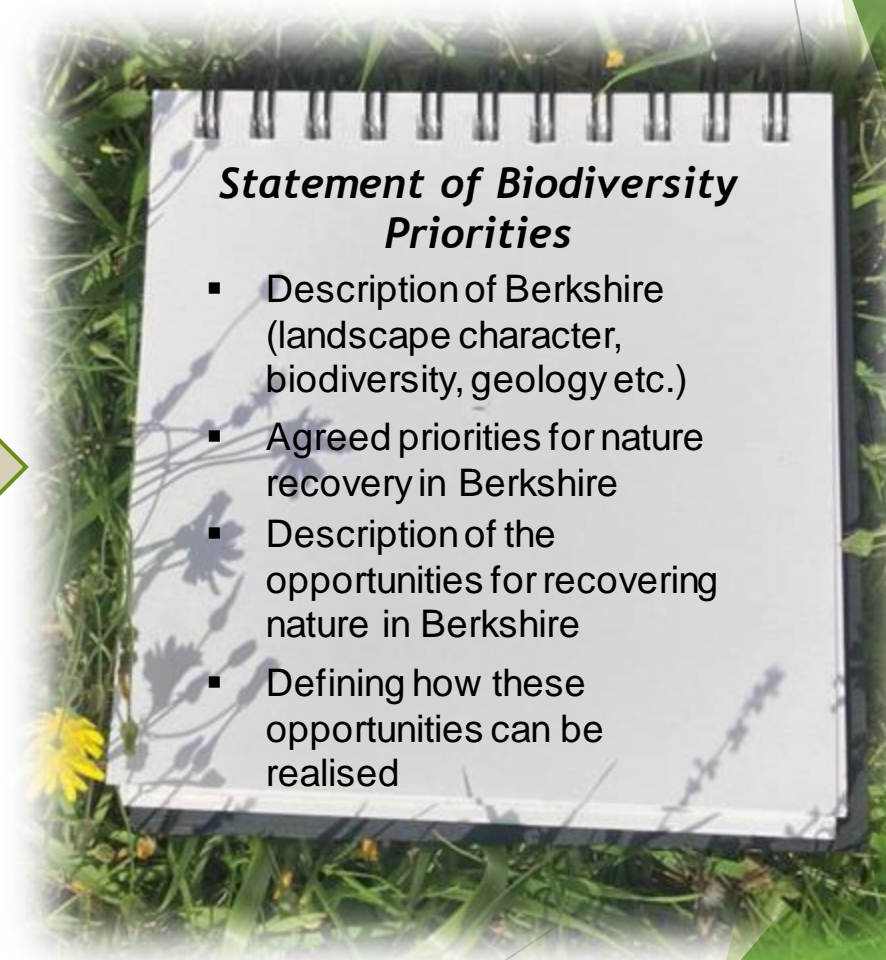


Local Nature Recovery Strategy

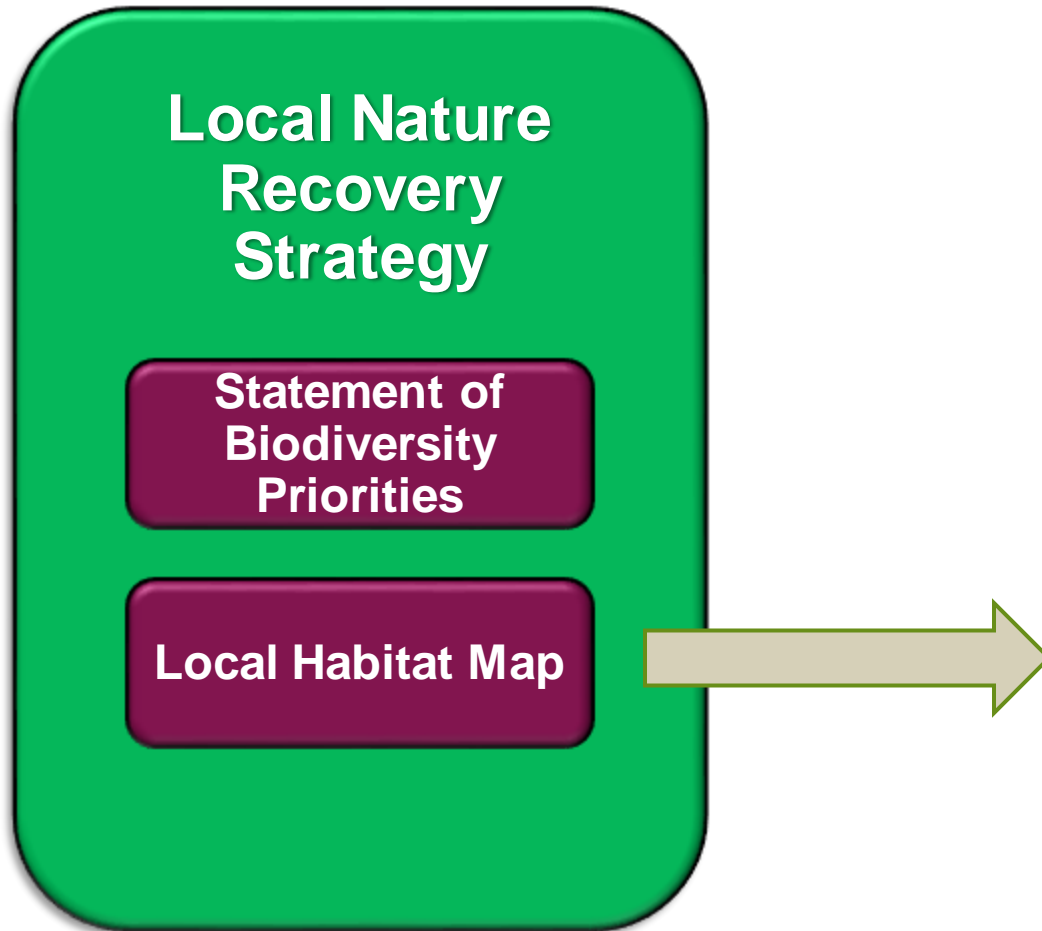
Statement of Biodiversity Priorities

Local Habitat Map

What is in an LNRS?



What is in an LNRS?



Example LNRS output – the Cornwall LNRS Pilot

CORNWALL NATURE RECOVERY STRATEGY

OUR PRIORITY MEASURES & OUTCOMES

For the next five years the following will be our collective **priorities**. We have distinguished two measures for each priority: to **Enhance & Protect** existing high-value habitats in Zone 1; and to **Create & Restore** in priority opportunity areas in Zone 2, towards extending, defragmenting and connecting the network with corridors. (The method for prioritisation and zoning is described in Appendix 1.)

SHORT-TERM PRIORITIES:
WE WILL ENHANCE, PROTECT, CREATE & RESTORE...

WETLAND AND NATURALISED WATERCOURSES
A dynamic, healthy and more connected wetlands, floodplains, ponds & watercourses are naturally functioning, whilst supporting diverse species, flood resilient communities, and fulfilling their blue carbon potential – especially peatland.

WOODLAND AND ANCIENT WOODLAND
An increase in woodland cover which is well managed, more connected and linked by resilient corridors with the right tree in the right place, protected ancient sites, and all woodland types supporting a diverse community of species.

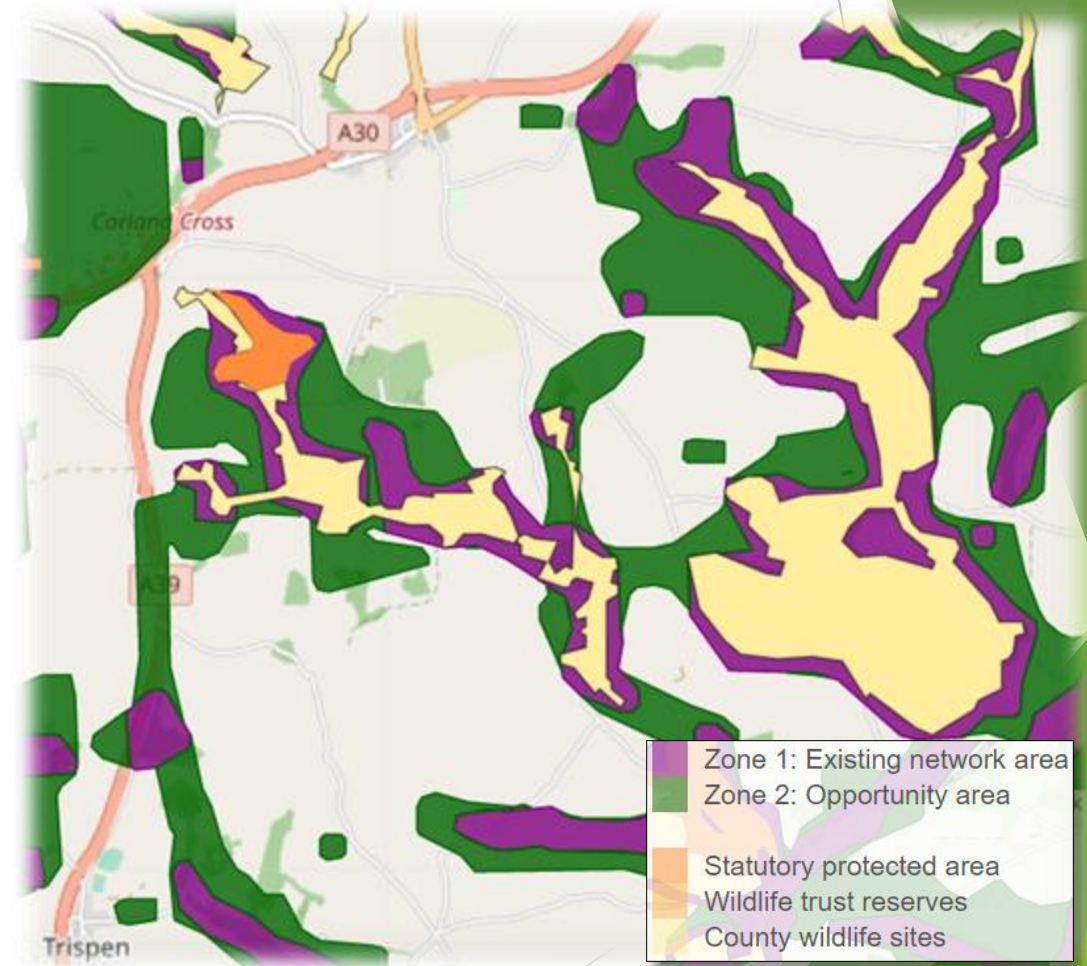
CORNISH HEDGES & EDGES
A wider, wilder and more joined up network of Cornish hedges and edges with enhanced canopy cover and uncultivated margins that is supporting diverse species to feed, breed and move.

HIGHER NATURE VALUE FARMLAND & WILDLIFE-RICH GRASSLAND
Less intensive, regenerative practices are enhancing habitats for increased biodiversity, climate resilience, and sustainable food production – including on non-marginal land. Wider and wilder margins are established, connecting wildflower-rich grasslands and pollen & seed-rich crops in a mosaic with other semi-natural habitats like scrub.

OUR COASTAL FRINGE
A continuous, buffered, nature-rich coastal corridor that joins up the coast to establish a climate resilient and adaptive coastal fringe of dynamic dunes, natural wetlands, and species-rich cliff-tops, slopes and intertidal habitats.

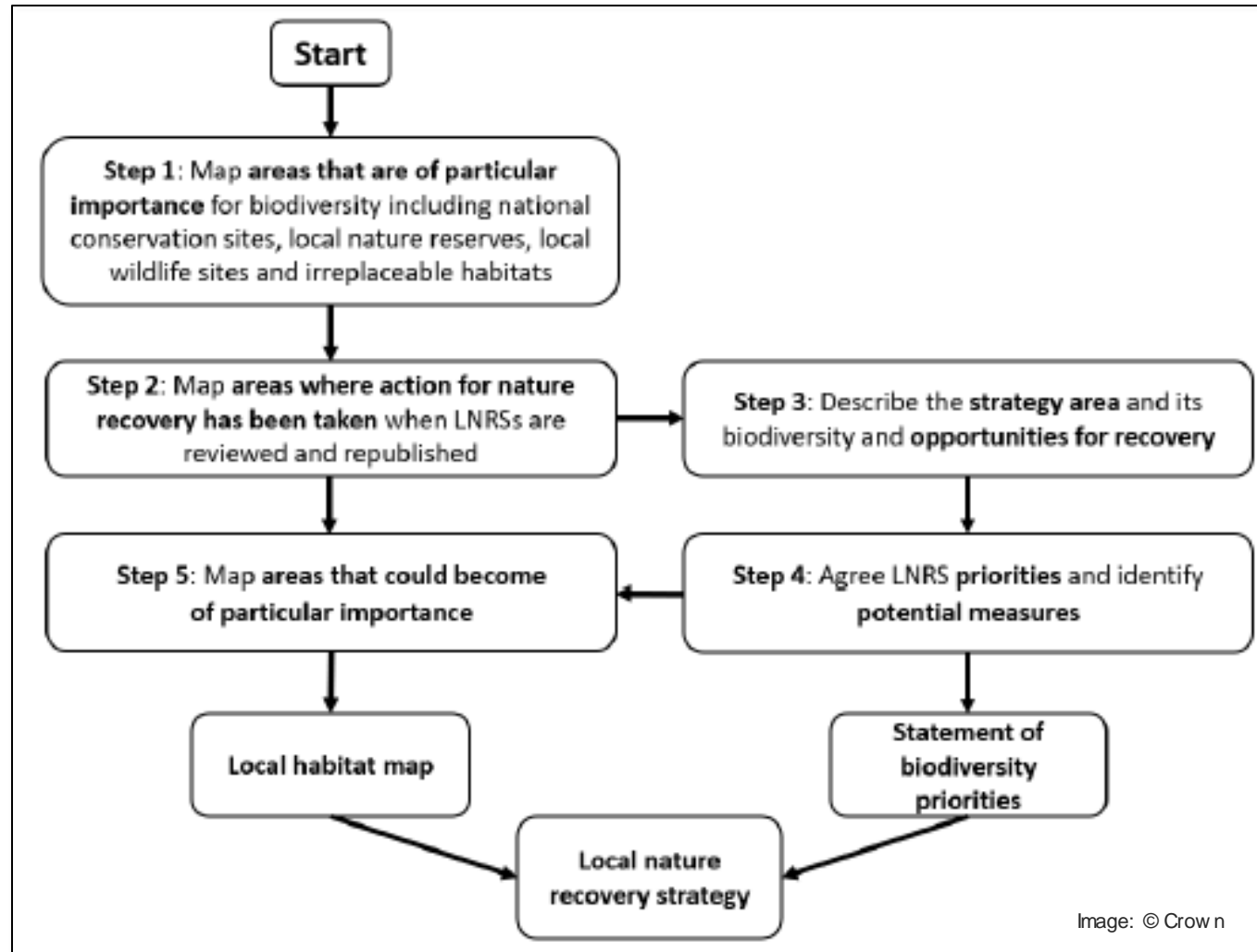
SOILS
Our soils are protected from erosion, compaction and loss by careful management and efficient use of crops and inputs – capturing and storing carbon, efficiently cleaning the air and water, and harbouring diverse fungi, bacteria & invertebrates.

57

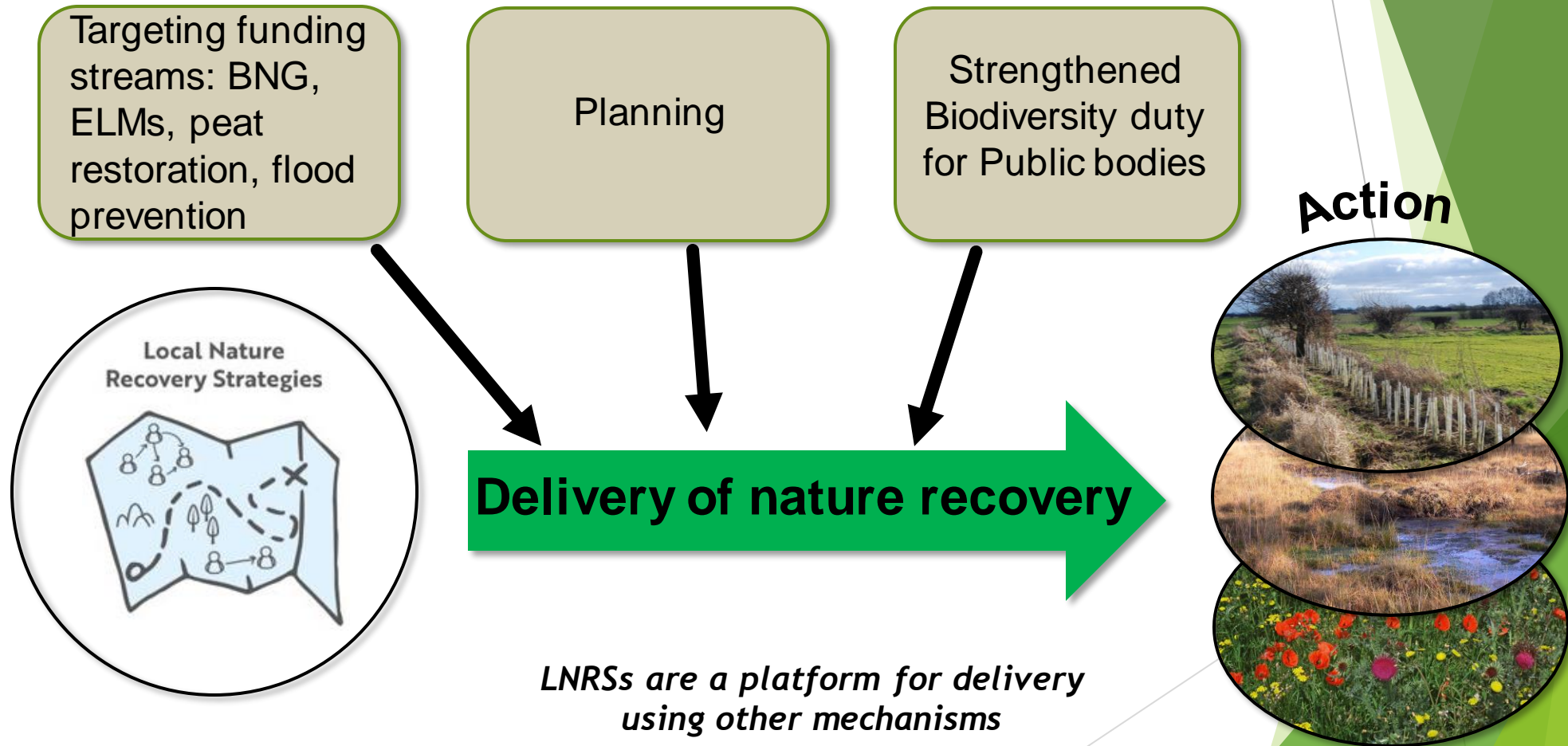


Images: Cornwall LNRS Pilot

The LNRS development process



How will the LNRS be used?



Summary: what an LNRS will deliver!

- ▶ More, bigger, better and more joined up wildlife spaces for biodiversity to thrive
- ▶ Ecosystem services:
 - ▶ Health and well being
 - ▶ Cleaner air
 - ▶ Cleaner water
 - ▶ Healthier, more resilient soils
 - ▶ Flood prevention
 - ▶ Carbon sequestration

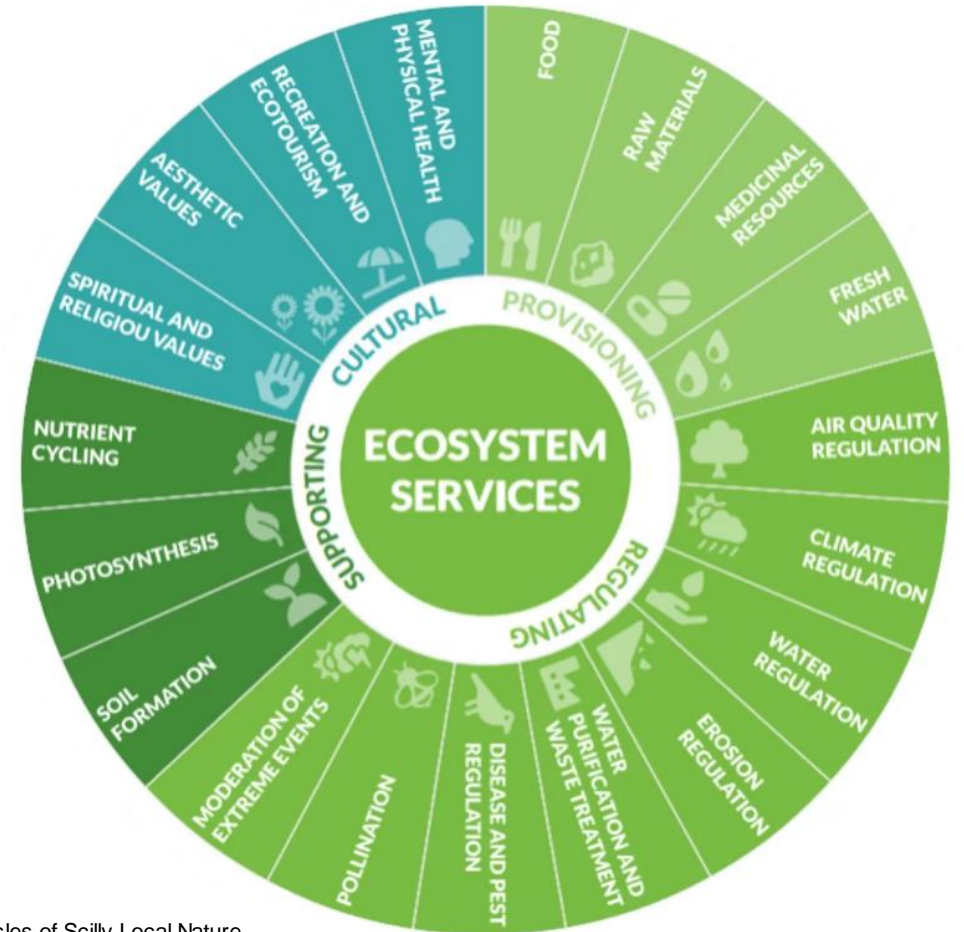


Image: Cornwall and Isles of Scilly Local Nature Partnership

The Berkshire Nature Recovery so far

- ▶ Governance structure
- ▶ Baseline of nature for Berkshire
- ▶ Planning engagement strategy



Our Steering Group

- Berkshire Nature Partnership
- Berkshire, Buckinghamshire and Oxfordshire Wildlife Trust
- Wokingham Borough council, representing Berkshire ecologists
- West Berkshire Council representing local authorities of Berkshire
- Natural England
- Environment Agency
- Forestry Commission
- NFU (National Farmers Union)
- The Crown Estate
- University of Reading, Head, Agri-Environment Group
- The Royal Borough of Windsor and Maidenhead - Climate Change and Biodiversity Cabinet member

Stakeholder Engagement Working Group	
Lynn Hughs	BBOWT, Education Manager
Alistair Will	Engagement Manager, Natural Environment Team at RBWM
Chris Moriarty	Councillor and Consultation Champion, RBWM
Steve Wilkes	Director, TVERC
Sarah Thornley	Thames Catchment Partnership, Maidenhead to Teddington Catchment Coordinator
Lorna Clark	Forestry Commission
Potential members	
Charlotte Hitchmough	Director, Action for the River Kennet
	Thames Basin Heath Partnership
	South East Water Catchment

Our Stakeholder Engagement Working Group

Mapping Working Group

Julie Gill	Bracknell Forest Borough Planning Policy
Mark Worrington	Reading Borough Planning Policy
Ian Motuel	RBWM Planning Policy
Howard Albertini	Slough Borough Planning Policy
Ian Bellinger	Wokingham Borough Planning Policy
Bryan Lyttle	West Berkshire Planning Policy
Dan Tritton	BBOWT - Senior Biodiversity and Planning Officer
Paul Temple	Application Administrator - GIS - RBWM
Steve Wilkes	Director, TVERC
Lorna Clark	Forestry Commission
Potential members	
Corinna Woodall/Henry Oliver	North Wessex Downs AONB
	Natural England
	EA Flooding team

Our Mapping Working Group

Farmer and Landowner Working Group

Nick Manderfield	East Berks Agricultural Society, NFU
Karen Davies	Natural England
Ben Gibbons	NFU, County Advisor for Berks, Bucks and Ox
Piran Borlase	Ecologist at AWE
Rosie Salt-Crockford	Rural Surveyor at CLA
Greg Wilkinson	CPRE
	National Trust
	Crown Estate
Potential members	
Nick Wallis	Newbury and District Agricultural Society

Our Farmer/ Landowner Working Group

Provisional timeline



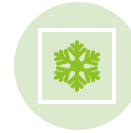
Summer 2023 -
**Creating governance,
baseline map
creation**



Autumn 2023 -
**Introductory
Webinars**



Winter 2023 -
Consultation period 1



Spring 2024 -
**Analysis of
Consultation 1**



Spring 2024 -
Consultation 2



Summer 2024 -
**Habitat Map creation
and working group
draft reviews**



Summer 2024 -
Priority list creation



Autumn 2024 -
LNRS publication

What are the opportunities of the LNRS for you?



Recorders - contribute valuable information



Residents - have your say in consultations



And so much more!

SUTHERLAND GRANGE



BATTLEMEAD



BRAYWICK



OCKWELLS





ENGAGEMENT

Social Media - Instagram, Facebook

Website - RBWM Together

Events - PlasticBlitz, Pond Dipping, Harvest Festival

Volunteers - Bat, Pond, Hedgerow Surveys



30 BY 30

CURRENT - 26%

30% of Land

Woodlands + Grassland

Protect + Connect

Hedgerows + Waterways

Prioritise targets by their progress towards 30 by 30

HABITAT ACTION PLAN PROGRESS

PROGRESS METRIC

GREEN - Completed

ORANGE - In Progress/On Track

RED - To be Started/Reviewed

DARK GREEN - Ongoing

Specific, Measurable,
Achievable, Relevant,
and Time-Bound

GRASSLAND

Grassland HAP Progress



PROGRESS TABLE

Objective	Target	Responsibility		Target date	2023 Progress
		Lead	Partner		
Understand the distribution of Priority Habitat grasslands and the species they support	1. Survey 25% of grassland LWS in five years to inform priority habitat distribution, condition and carbon sequestration	TVERC	RBWM	2025	Awaiting results from TVERC/Have received some habitat assessments
	2. Survey at least 20 sites for each of the associated species in five years to better understand their distribution	Wild groups	RBWM, BBOWT	2025	Wilds to choose sites for surveying.
Identify opportunities to increase the distribution of Priority Habitat grassland	3. Survey at least 5ha of potential priority habitat grassland sites with the aim to propose new LWS	RBWM	Wild groups, TVERC	2025	Potentially with mandatory BNG January 2024 - wait for LNRS opportunity areas. Needs budget and landowner consent.
	4. Identify 10% of other grassland creation or enhancement that can be managed to develop into priority habitat	RBWM	RBWM, Developers, Farmers, Landowners	2023	Potential BNG involment
Identify opportunities to enhance the biodiversity value and carbon squistration of existing grasslands	5. Review management plans for all RBWM owned grasslands to optimise opportunities for wildlife (to include recreational areas, roadside verges and roundabouts) and estimate sequestered carbon.	RBWM		Update management plans by 2024	Quarterly meetings between Naural Environment and Parks Teams Verge mapping starting in the near future with the view of updating Tivoli contracts.
Achieve 30 by 30	6. Identify how targets will have contributed to 30 by 30 by 2025 and how much additional grassland would need to be created by 2030	RBWM		2022	Awaiting data from TVERC about HAP proportions within 30 by 30 results.
Increase the area of priority habitat grassland in the Borough	7. Encourage 50% of LWS grassland in positive management	RBWM	TVERC, BBOWT, Farmers	2025	With TVERC to encourage landowners with letters. RBWM have offered consultations and are managing our own grasslands.
	8. Maintain all SSSI grassland in favourable or favourable recovering condition with at least 40% in favourable condition.	NE	RBWM, Landowners	2025	Management by Natural England. Ongoing but unknown and not in our remit.
Increase the area of other grasslands managed for biodiversity	9. Positively manage 5km of roadside verge and roundabout grasslands	RBWM		2025	Wildlife verge scheme to expand. Change wording to m2?
	10. Provide best practice guidance for RBWM grassland areas	RBWM		Provide best practice guidelines by 2025	Management Plans are in place for Borough grasslands. Clarification needed - council land or land in the borough?
	11. New developments to create 20 ha biodiverse grasslands	RBWM	Developers	2025	BNG on new developments - with the Planning Dept and pre-development habitats/condition
Encourage the creation and enhancement of biodiverse grasslands	12. Engage with the National Trust to look at increasing the land owned by them for biodiversity by 10%	RBWM	National Trust, Wild Groups	2025	Quarterly meetings are taking place - 10% out of our remit.
	13. Provide best practice guidelines to other landowners, including private individuals and organisations, schools, farmers and other public bodies.	RBWM	NE, BBOWT, Landowners, Farmers	From 2022	Resources have been shared on all social media platforms, including RBWM Together page, along with an invite for landowners to contact the Natural Environment Team for a free site visit and consultaion.

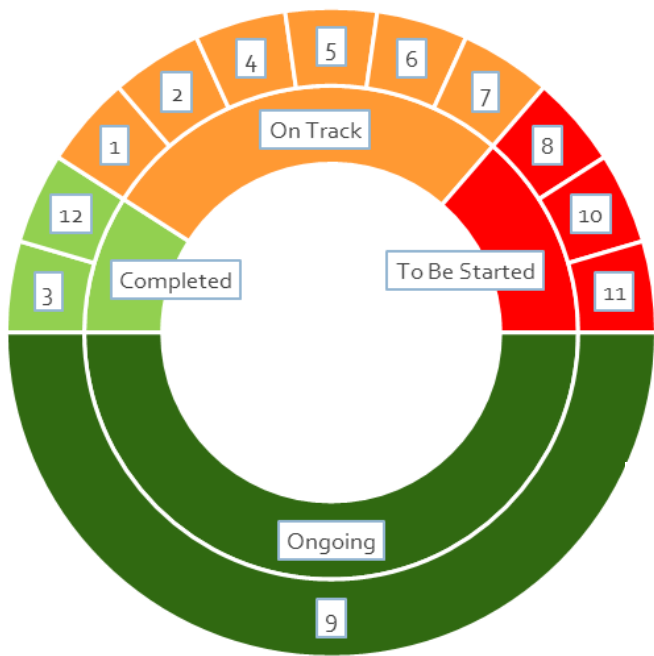
WOODLAND

Woodland HAP Progress

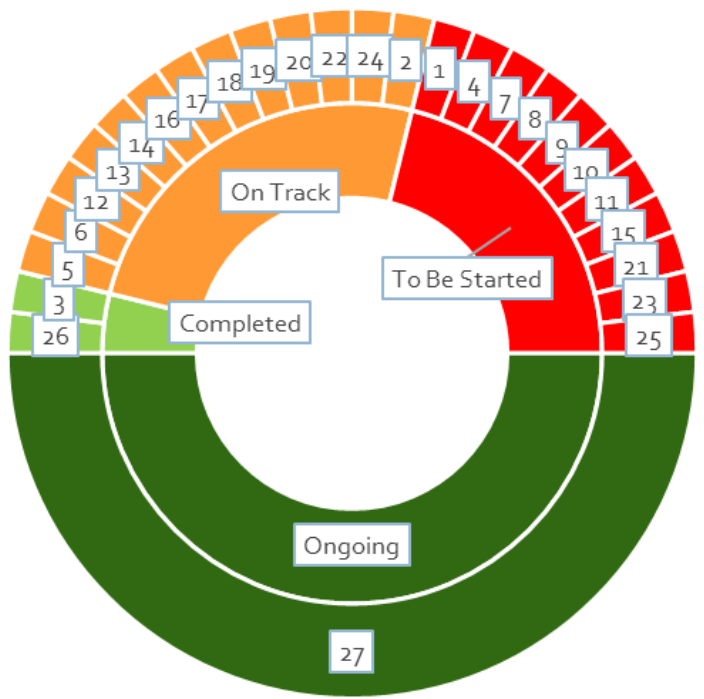


STANDING WATER URBAN

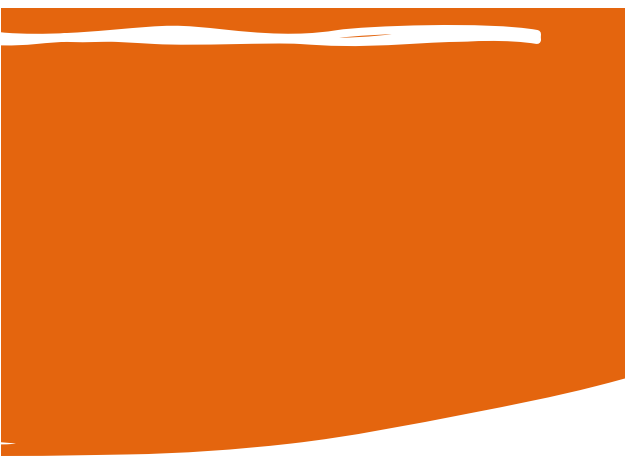
Standing Water HAP Progress



Urban HAP Progress



Waterways HAP Progress



Question
time



What's next?

Survey emailed shortly -
sign up!

Stakeholder Engagement
sessions coming soon

January 2024

Thanks so
much for
attending
today

Rosie.street@rbwm.gov.uk

[Berkshire's Local Nature Recovery
Strategy | RBWM Together](#)

<https://rbwmtogether.rbwm.gov.uk/Berkshire-local-nature-recovery-strategy>

Berkshire NRN Stakeholders

Stakeholders: farmers, local planning authorities, government agencies, businesses, Non-Governmental Organisations, community interest groups and the public

Berkshire	West Berks	Reading	Wokingham	Bracknell Forest	RBWM	Slough
Public bodies						
Natural England	LA (land managers, planners, etc)	LA (land managers, planners, etc)	LA (land managers, planners, etc)	LA (land managers, planners, etc)	LA (land managers, planners, etc)	LA (land managers, planners, etc)
Environment Agency	Parish and Town Councils	Parish and Town Councils	Parish and Town Councils	Parish and Town Councils	Parish and Town Councils	Parish and Town Councils
Forestry Commission	North Wessex Downs AONB		Schools	Broadmoor Hospital (West London Health Trust)		
TVERC	Schools	Schools	Youth Council	Schools	Schools	Schools
Network Rail	Youth Council	Youth Council		Youth Council	Youth Council	Youth Council
National Highways (Highways Eng AWE)						
North Wessex Downs AONB						Burnham Beeches
Chilterns AONB						
Berkshire Health NHS Trust						
NGO's						
	Newbury and District Agricultural Society					
BBOWT		FOE				
RSPB						
Woodland Trust						
Freshwater Habitats Trust						
Peoples Trust for Endangered Species						
National Trust	Basilidon Park		Finchampstead Ridges		Cookham Commons	
butterfly Conserv upper Thames branch						
Buglife						
CPRE						
Ramblers						
Plantlife						
Nature Space Partnership						
Rewilding Britain						
Wild Trout Trust						
Catchment Partnership hosts	Action for River Kennet	South East Rivers Trust	South East Rivers Trust		Thames 21	Thames 21
Mammal Trust						
Partnerships						
Berkshire Local Nature Partnership	Kennet Catchment Partnership	Kennet Catchment Partnership	Loddon Catchment Partnership	Bracknell Forest Nature Partne	Maidenhead to Teddington CP	Maidenhead to Teddington CP
Big Chalk Programme	Solent mitigation partnership (River Test has a small part in W Kennet Catchment Partnership Blackwater Valley Countryside Partnership & Trust)					
Landowners/ reps						
NFU	Local Wildlife Site owners	Local Wildlife Site owners	Local Wildlife Site owners	Local Wildlife Site owners	Local Wildlife Site owners	Local Wildlife Site owners
Crown Estate	Beale Park		Reading Football Club	Syngenta		
Polo/racing clubs	Town and Manor of Hungerford		Johnson & Johnson	Southern Housing Group		
Ministry of Defence				Sylva Homes		
Oxford Diocese				Billingbear Park		
Farmers						
Private organisations/business						
Thames Water	Eling Estate	University of Reading	Farley Estates	Waitrose & Partners	Centrica	Mars
Affinity Water	BioCap	Grundon	Oracle	Hewlett Packard	Colgate	Telefonica
South East Water	Atomic Weapons Establishment		Industrial Estates	3M	Legoland	Ferarri
Ethos EP	Englefield Estate			Panasonic	Volvo	Lanes Group
Cemex	Wasing Estate			Private fisheries(Binfield/Sand Summerleaze)		UCB
TV Berks Local Enterprise Partners	Ufton Court			Warfield Park Homes		
UK Power Networks				Wellington College		
Scottish and Southern Electricity Networks						
Horse riding/livery stables						
Golf courses						

Ecological consultants

Universities/colleges

FWAG

CLA

Voluntary Groups

County Recorders	NDOC	Conserve reading on wednesda	Hedge and woodland conserva	Binfield badger group	Windsor & Maidenhead conse	Datchet village society
Berkshire Ornithological Club	Bucklebury heathlands conserv	Reading urban wildlife group	Wokingham without environme	Bracknell conservation volunte	Windsor & Maidenhead urban wildlife group	
Berkshire Conservation Volunteers	East Ilsley conservation group	https://nature-nurture.co.uk/	Earley Environmental Group	Bracknell district urban wildlif	Wild Maidenhead	Evergreen 2000
BRAG	Elm farm group	RSPB Reading	Friends of the Emm Brook	Hedgerow & woodland conserv	Wild Cookham	
Berks Mammal Group	Greenham & crookham cons. V	Reading district angling associ	Wokingham District Veteran Tr	Bracknell Forest Natural Histor	Wild Datchet	
Berks & Sth Bucks Bat Group	Kennet valley countryside project		Lavells Wetland Trust	Warfield Environment Group	Ascot Wildlife	
Berkshire Moth Group	Pang valley conservation volunteers		Loddon Fisheries and Conserva	Wildlife in Ascot	Wild Eton Wick	
The Conservation Volunteers	Speen conservation group		BENHS	Blackwater Valley Countryside	Binfield Badger Group	
Binfield badger group	Theale area bird conservation group		Moor Green Lakes Group	Binfield Environment Group	Bisham Barn Owl Group	
	Hamstead Marshall Wildlife Group		Friends of Ruscombe Wood	Wokingham&Bracknell Local G	Friends of Summerleaze Lake	
			Holt Copse Conservation Volunteers		Transition Maidenhead, Maidenhead Eco Action Hub	
Fishing clubs			Feeling Fruity			

Wider Community

Scout Association

Woodcraft Folk (International Falcon Movement)

Forestry Societies

Faith groups

Fitness clubs

University of the Third Age

Ethnic diversity groups

Traveller communities

Rotary clubs

Berkshire Guiding

Bracknell Nepalese Society

Bracknell Forest Faith and Belief Forum